

Supply Voltage (Vs): 4.5 - 30 Vdc @ 13 mA
Pulse Out (Vo): 0 - Vs, 0 - 5V (TTL), Open Collector (NPN or PNP)
Frequency Range: 0 to 25 kHz (Std), ≤ 100 kHz (Special order)
Air Gap: 0.50" (12mm) Max.
Temp. Ranges: **2TE:** -40° to 220° F (-40° to 120° C)
3TE: -40° to 290° F (-40° to 145° C)

1/4 **Thread Size:** 1/4-28, 1/4-40, M6x1
M6 **Length (L):** 0.8" to 3" (20 to 75 mm)

0155A
0155M (M6)

0155K

0155

0155S



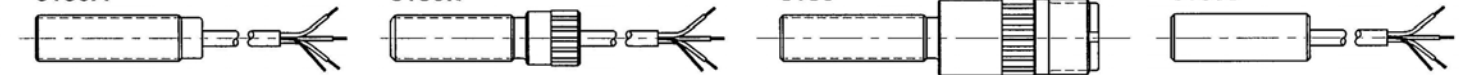
3/8 **Thread Size:** 3/8-24, M10x1.25
M10 **Length (L):** 0.8" to 5" (20 to 130 mm)

0156A

0156K

0156

0156S



1/2 **Thread Size:** 1/2-20
Length (L): 0.8" to 5" (20 to 130 mm)

0158S

0158A
0158M (M12)

0158
0158MC (M12)



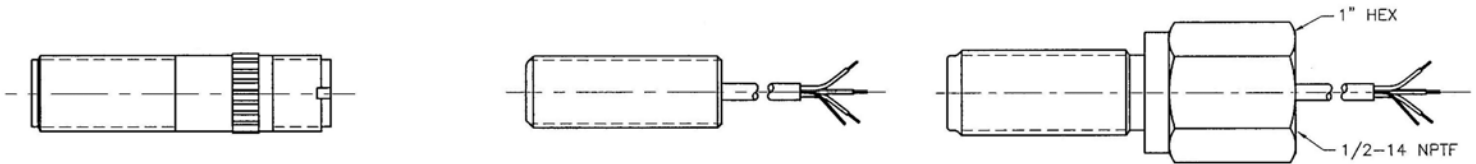
5/8 **Thread Size:** 5/8-18 UNF, M16x1.5
M16 **Length (L):** 0.8" to 10" (20 to 250 mm)

Available in Dual Output

0161
0161 (M16)

0160C
0160MC (M16)

0160Y

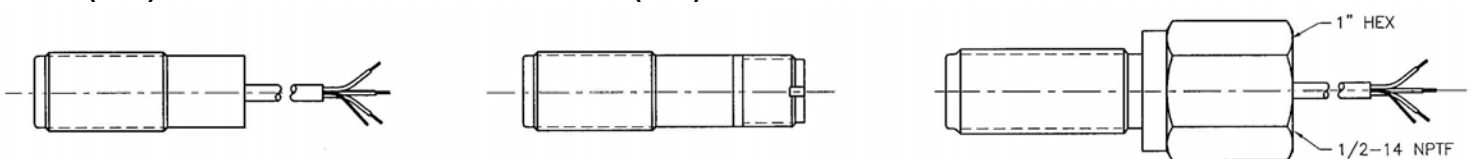


3/4 **Thread Size:** 3/4-16, 3/4-20, M18x1.5
M18 **Length (L):** 2.1" to 10" (54 to 250 mm)

0172
0172 (M18)

0162C
0162MC (M18)

0172Y



Detailed specification sheets are available for each sensor listed; please contact Spectec for more information.